



50 HAWTHORN ROAD

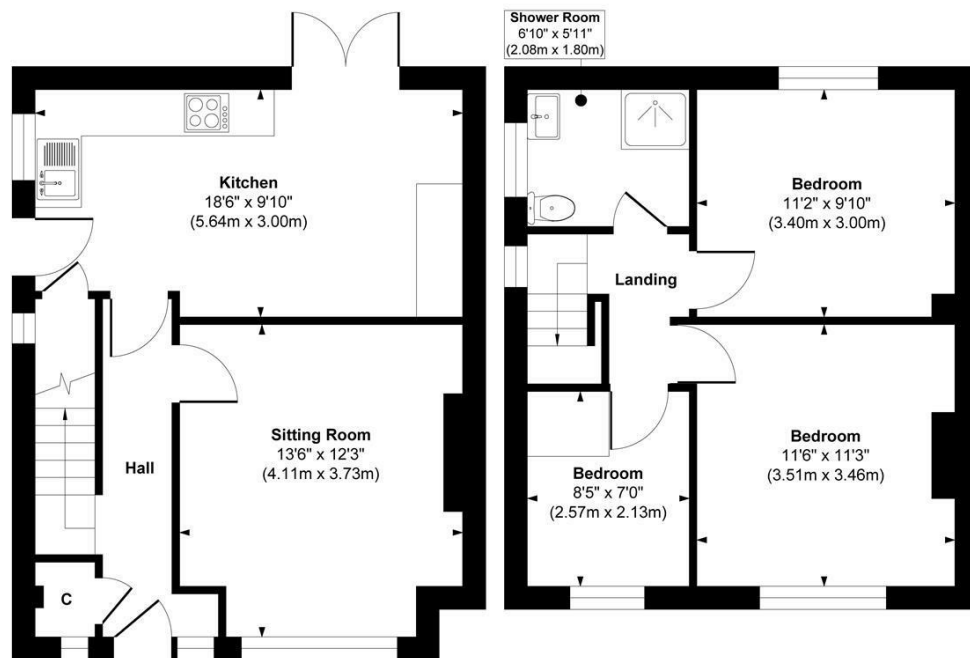
LEEDS, LS19 7UT

£299,950
FREEHOLD

Welcome to 50 Hawthorn Road, a recently renovated three-bedroom semi-detached home, thoughtfully designed and finished by the current owners. Located in Yeadon, this property blends modern living with convenience, offering easy access to excellent transport links and local amenities.

MONROE

SELLERS OF THE FINEST HOMES



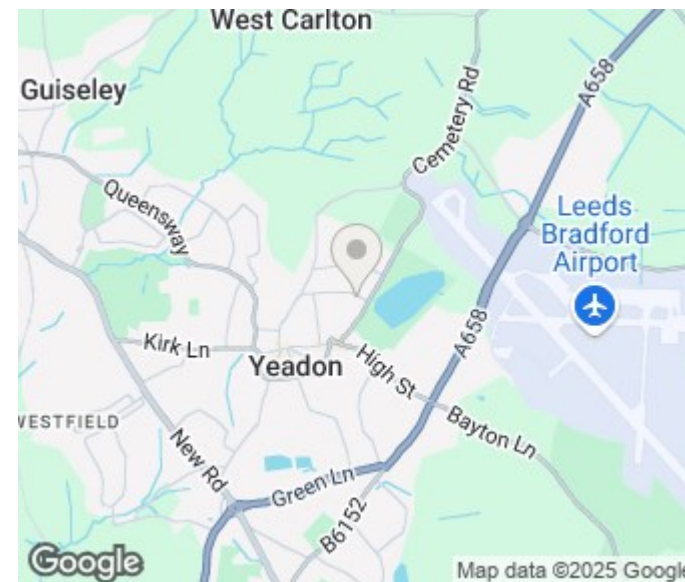
Ground Floor
Approximate Floor Area
433 sq. ft
(40.22 sq. m)

First Floor
Approximate Floor Area
397 sq. ft
(36.88 sq. m)

Approx. Gross Internal Floor Area 830 sq. ft / 77.10 sq. m

Illustration for identification purposes only, measurements are approximate, not to scale.

Copyright © Zenith Creations.



Energy Efficiency Rating		
	Current	Potential
Very energy efficient - lower running costs		
(92 plus) A		83
(81-91) B		
(69-80) C		
(55-68) D	65	
(39-54) E		
(21-38) F		
(1-20) G		
Not energy efficient - higher running costs		
England & Wales	EU Directive 2002/91/EC	

Agents Note: Whilst every care has been taken to prepare these particulars, they are for guidance purposes only. All measurements are approximate and are for general guidance purposes only and whilst every care has been taken to ensure their accuracy, they should not be relied upon and potential buyers/tenants are advised to recheck the measurements

Alwoodley Sales
716 King Lane Alwoodley
Leeds
West Yorkshire
LS17 7BA

0113 870 4443
hello@monroestateagents.com
www.monroestateagents.com

MONROE

SELLERS OF THE FINEST HOMES